



UNITED KINGDOM MATHEMATICS TRUST

## *Primary Team Maths Resources 2014*

### *Supervisor's Answer Booklet*

*Please ensure that students do not have access to this booklet, and take care to hold it so that answers cannot be seen.*

## Group Round Answer Sheet

(Units can be ignored)

<u>Question 1</u>  <b>8</b>	<u>Question 6</u>  <b>2100m<sup>2</sup></b>	<u>Question 11</u> <table border="1"><tr><td><b>Orange</b></td><td><b>Red</b></td><td><b>Green</b></td></tr></table>	<b>Orange</b>	<b>Red</b>	<b>Green</b>
<b>Orange</b>	<b>Red</b>	<b>Green</b>			
<u>Question 2</u>  160m	<u>Question 7</u>  <b>21</b>	<u>Question 12</u>  <b>7 weeks</b>			
<u>Question 3</u>  <b>25</b>	<u>Question 8</u>  <b>137</b>	<u>Question 13</u>  <b>15kmh<sup>-1</sup></b>			
<u>Question 4</u>  <b>25,27,29</b>  (in any order)	<u>Question 9</u>  <b>901</b>	<u>Question 14</u>  <b>23</b> <hr/> <b>24</b>			
<u>Question 5</u>  <b>10</b>	<u>Question 10</u>  <b>24</b>	<u>Question 15</u>  <b>20</b>			

## Logic Round Answers

	<b>Mr. Smith</b>	<b>Mrs. Richard</b>	<b>Mr. Henry</b>	<b>Miss Jones</b>	<b>Mrs. Talbot</b>
<b>Name of classroom</b>	Circle	Triangle	Square	Cylinder	Sphere
<b>Door number</b>	3	17	11	7	13
<b>Door colour</b>	Red	Green	White	Orange	Yellow
<b>Teacher's subject</b>	Art	Maths	Science	History	English
<b>Teacher's favourite sport</b>	Rugby	Netball	Jogging	Football	Cricket

## Crossnumber Answers

<sup>1</sup> <b>4</b>	<b>9</b>	<b>7</b>				<sup>2</sup> <b>1</b>	<b>4</b>	<sup>3</sup> <b>5</b>
<b>8</b>			<sup>4</sup> <b>6</b>	<b>1</b>	<sup>5</sup> <b>3</b>			<b>0</b>
<sup>6</sup> <b>6</b>	<sup>7</sup> <b>4</b>		<b>5</b>		<b>5</b>		<sup>8</sup> <b>4</b>	<b>4</b>
<sup>9</sup> <b>2</b>	<b>5</b>	<sup>10</sup> <b>2</b>	<b>0</b>		<sup>11</sup> <b>2</b>	<sup>12</sup> <b>4</b>	<b>3</b>	<b>0</b>
		<b>4</b>				<b>4</b>		
<sup>13</sup> <b>1</b>	<sup>14</sup> <b>4</b>	<b>0</b>	<sup>15</sup> <b>8</b>		<sup>16</sup> <b>1</b>	<b>4</b>	<sup>17</sup> <b>7</b>	<sup>18</sup> <b>9</b>
<sup>19</sup> <b>8</b>	<b>1</b>		<b>0</b>		<b>2</b>		<sup>20</sup> <b>1</b>	<b>6</b>
<b>1</b>			<sup>21</sup> <b>1</b>	<b>7</b>	<b>8</b>			<b>7</b>
<sup>22</sup> <b>1</b>	<b>5</b>	<b>3</b>				<sup>23</sup> <b>1</b>	<b>0</b>	<b>8</b>

Pupils can ask for their answers so far to be marked at any time. If an answer is correct, tick it and award one mark; if it is wrong, cross it out and enter the correct digit.

Pupils may enter just one digit if they wish, rather than a complete answer. Pupils may sacrifice a square, by guessing, if they wish.

## Shuttle Round Answers

(Units can be ignored)

<b>A1</b>	<b>40</b>
<b>A2</b>	<b>200</b>
<b>A3</b>	<b>55</b>
<b>A4</b>	<b>52cm</b>

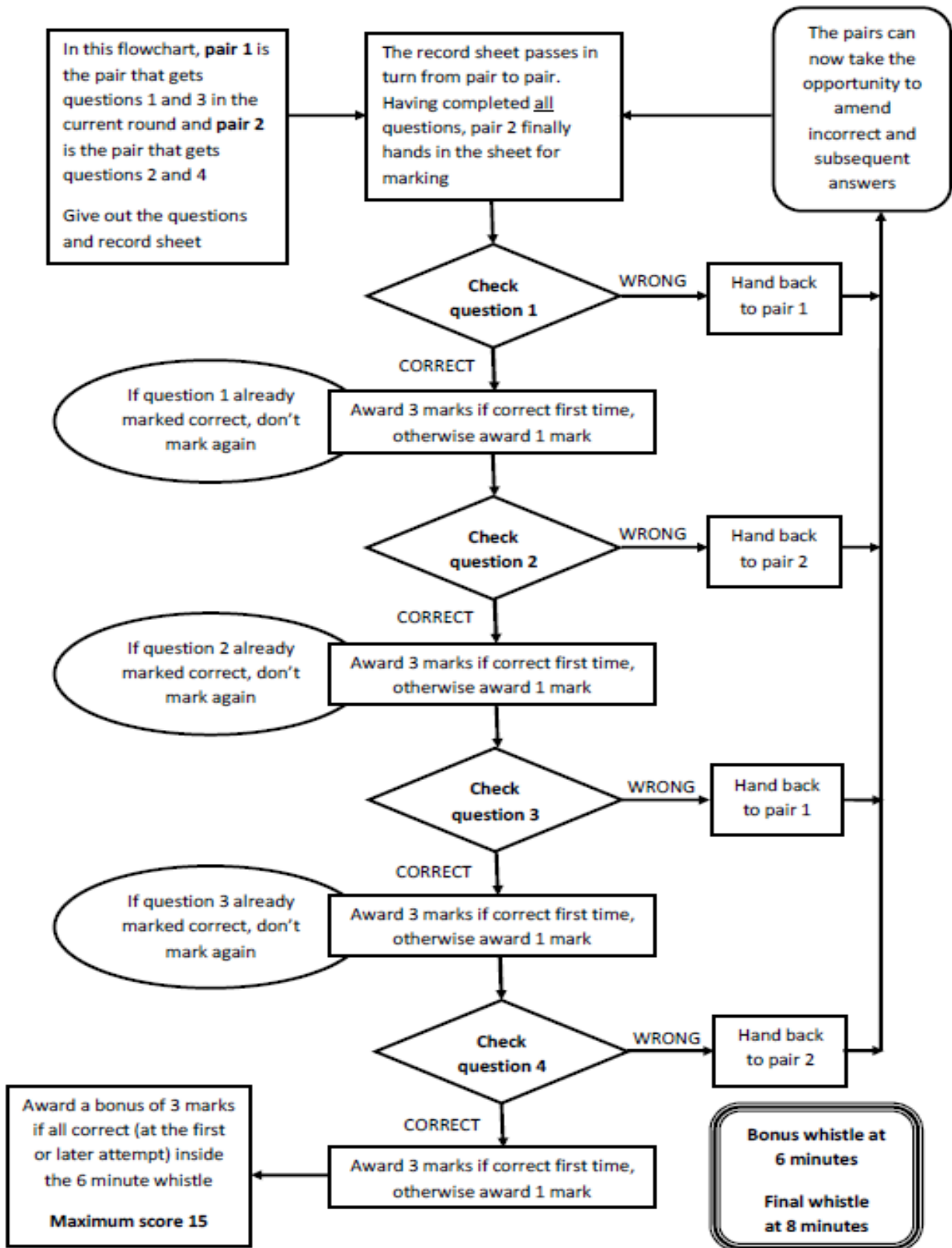
<b>B1</b>	<b>96</b>
<b>B2</b>	<b>10</b>
<b>B3</b>	<b>60</b>
<b>B4</b>	<b>216<sup>0</sup></b>

<b>C1</b>	<b>128</b>
<b>C2</b>	<b>32</b>
<b>C3</b>	<b>29</b>
<b>C4</b>	<b>99<sup>0</sup></b>

<b>D1</b>	<b>72</b>
<b>D2</b>	<b>27</b>
<b>D3</b>	<b>54</b>
<b>D4</b>	<b>32p</b>

See the flowchart below for guidance about marking the Shuttle Round and clarification of the scoring.

## Instructions for Scoring the Shuttle Round



## Relay Answers

Correct answers score 2 points – circle '2' or '0' for each answer.  
Units can be ignored.

School Name \_\_\_\_\_ School Number \_\_\_\_\_

<b>A1</b>	15p	2 0	<b>B8</b>	$80^\circ$	2 0
<b>B1</b>	$\frac{1}{4}$	2 0	<b>A9</b>	50 sq ft	2 0
<b>A2</b>	12	2 0	<b>B9</b>	9	2 0
<b>B2</b>	60	2 0	<b>A10</b>	28 cm	2 0
<b>A3</b>	31	2 0	<b>B10</b>	10	2 0
<b>B3</b>	3224	2 0	<b>A11</b>	$64 \text{ cm}^2$	2 0
<b>A4</b>	11	2 0	<b>B11</b>	60 Kg	2 0
<b>B4</b>	2916	2 0	<b>A12</b>	$145^\circ$	2 0
<b>A5</b>	17	2 0	<b>B12</b>	6	2 0
<b>B5</b>	(€)378	2 0	<b>A13</b>	6	2 0
<b>A6</b>	6	2 0	<b>B13</b>	$108 \text{ cm}^2$	2 0
<b>B6</b>	$108 \text{ cm}^2$	2 0	<b>A14</b>	$132^\circ$	2 0
<b>A7</b>	156.25 or $156\frac{1}{4}$	2 0	<b>B14</b>	10	2 0
<b>B7</b>	5.7 or $5\frac{7}{10}$	2 0	<b>A15</b>	36	2 0
<b>A8</b>	1672	2 0	<b>B15</b>	£1.50	2 0

Total Score:

## Make a Number Challenge

There may be a variety of ways of solving these problems so please check answers carefully. A possible solution for each question is given below.

1.  $100 \times 6 + 8 - 7$

2.  $2 \times 8 \times 25 - 5$

3.  $4 \times 100 - 8 \times 8 - 3$

4.  $3 \times (1 + 3) \times 25 - 3$

5.  $(8 + 1) \times (50 + 5 + 4)$

6.  $8 \times (50 + 7) + 3 \times 4$

7.  $25 \times (4 + 2 + 2 \div 2) - 9$

8.  $4 \times (7 \times 25 - 8)$

9.  $(5 \times 7 - 9 \div 9) \times 7$

10.  $(5 + 6) \times (25 + 3 \times 5 - 3)$



## Speed Test Answers

(Units can be ignored)

<u>Question</u>	<u>Answer</u>	<u>Question</u>	<u>Answer</u>
<b>1</b>	<b>£1.12</b>	<b>11</b>	<b>6.4</b>
<b>2</b>	<b>11</b>	<b>12</b>	<b>6</b>
<b>3</b>	<b>40</b>	<b>13</b>	<b>420</b>
<b>4</b>	<b>- 29</b>	<b>14</b>	<b>8</b>
<b>5</b>	<b>3/8</b>	<b>15</b>	<b>8</b>
<b>6</b>	<b>7</b>	<b>16</b>	<b>5</b>
<b>7</b>	<b>200</b>	<b>17</b>	<b>7/8</b>
<b>8</b>	<b>122</b>	<b>18</b>	<b>138</b>
<b>9</b>	<b>434</b>	<b>19</b>	<b>17</b>
<b>10</b>	<b>7560</b>	<b>20</b>	<b>6</b>